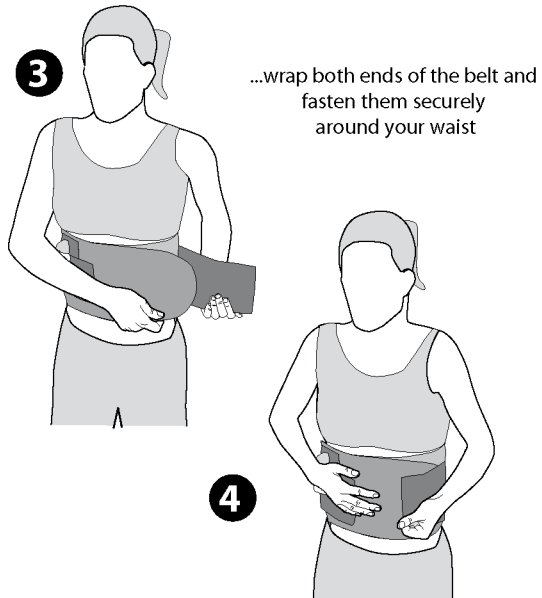
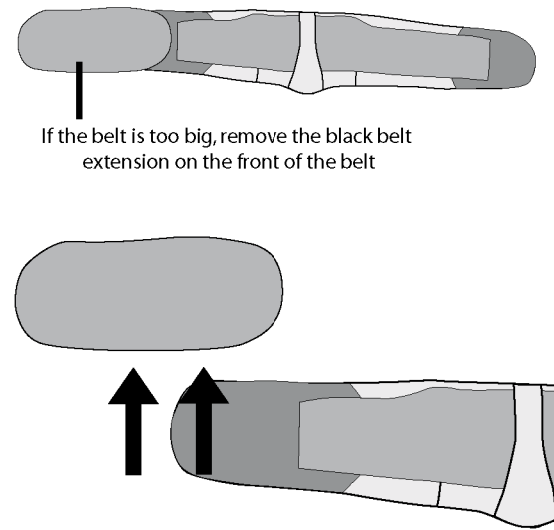




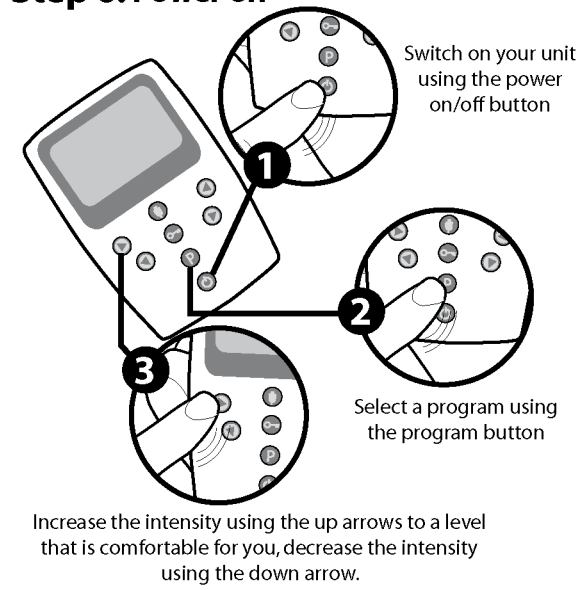
Step 5: Position belt



Step 5: belt extension



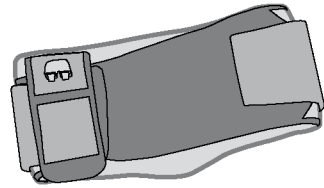
Step 6: Power on



Step 7: Session over



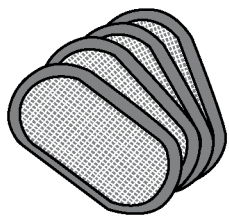
Congratulations on purchasing your new ReVive Back Pain Relief Belt



Belt



Control unit



Pads



Battery

Please read User Manual fully before use.

Step 1: Insert batteries

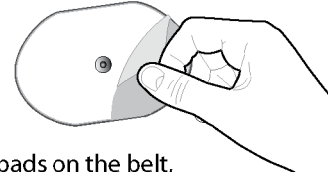


Step 2: Connect the unit to the belt

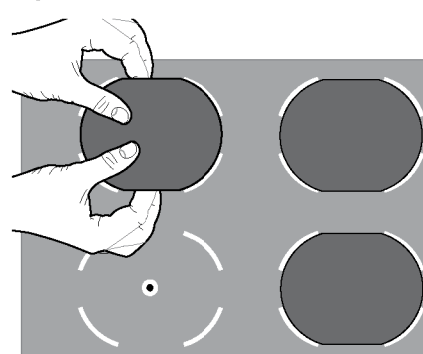


Step 3: Remove liners (white side)

Remove liners from the white side of the pads

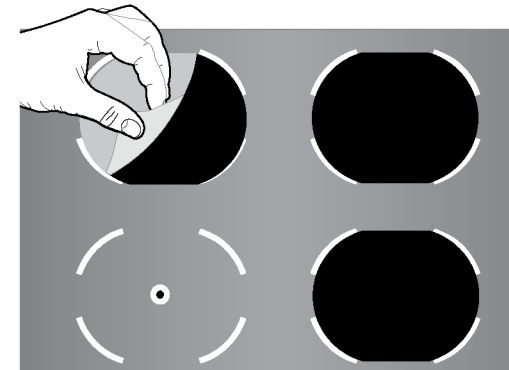


...and position these pads on the belt, connecting them to the studs on the belt



Step 4: Remove liners (Black side)

Remove the oversized liners from the black side of the pads



Step 5: Position belt

