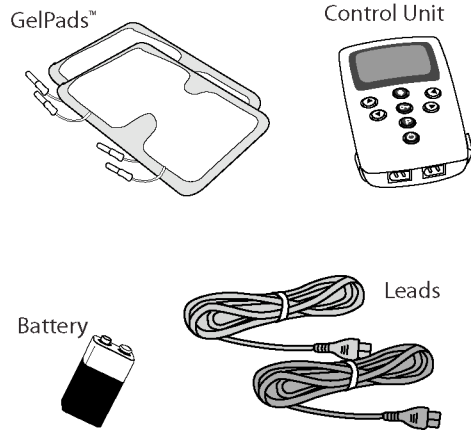


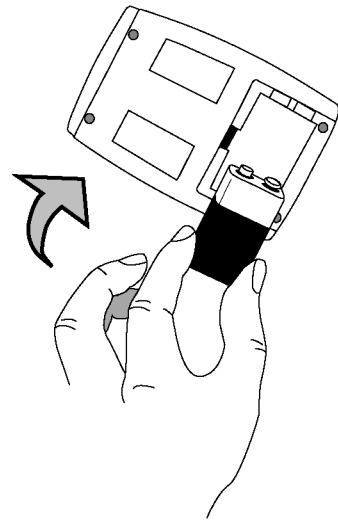
Congratulations on purchasing your new ReVive Professional Muscle Conditioner

Pack Contents

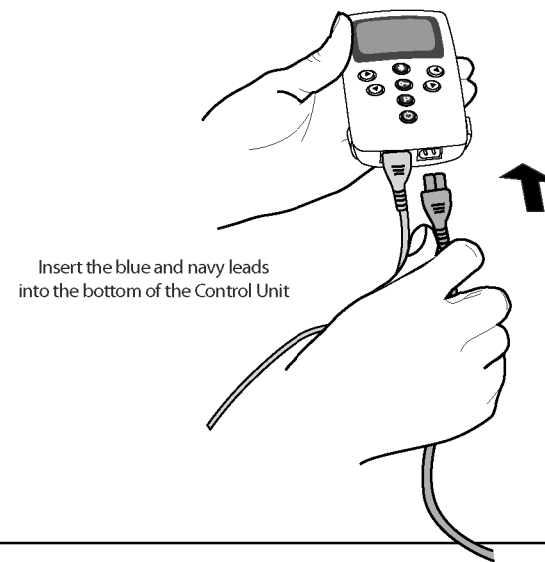


 Please read User Manual fully before use.

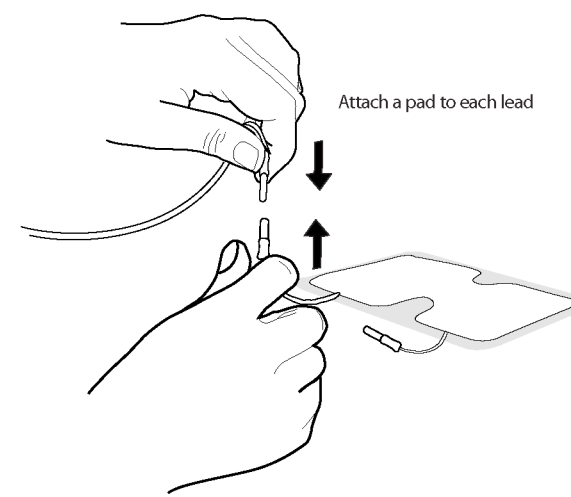
Step 1: Insert battery into Control Unit



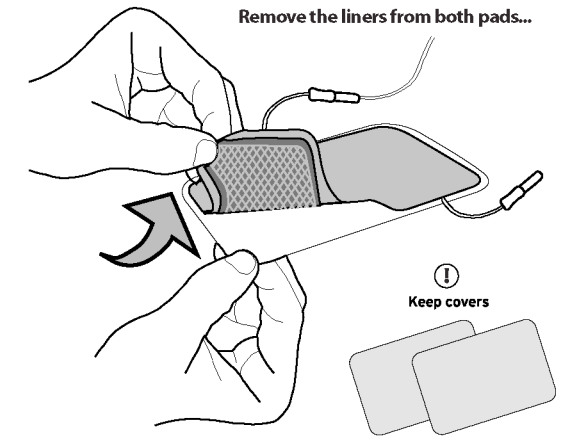
Step 2: Insert leads



Step 3: Attach pads



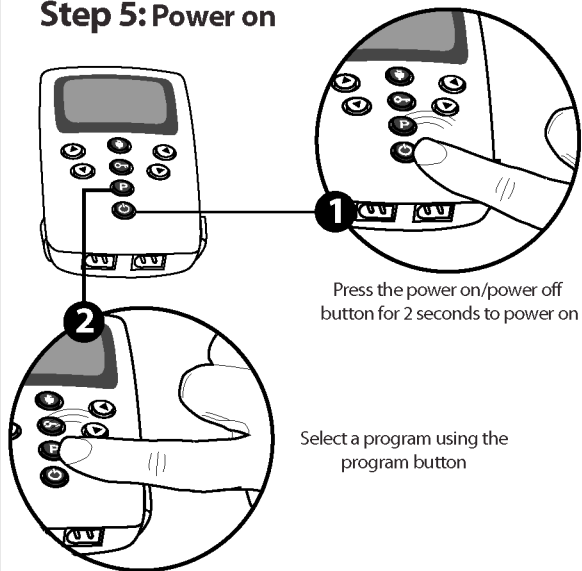
Step 4: Remove liners



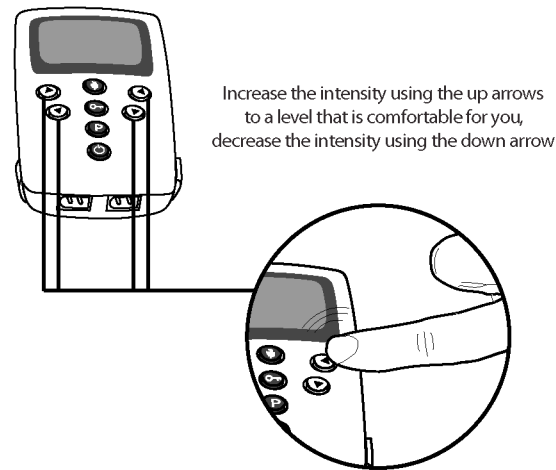
...and position the pads on your body (see Pad placement chart) with the grid side on your skin

© 2008 Bio-Medical Research Ltd., Parkmore Business Park West, Galway, Ireland. Part No.: 2400-5704 Rev1 Issue Date: 04/08

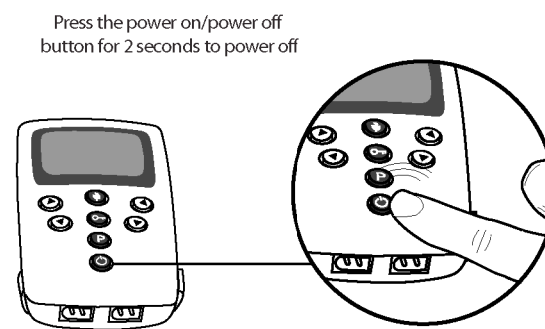
Step 5: Power on



Step 6: Increase intensity

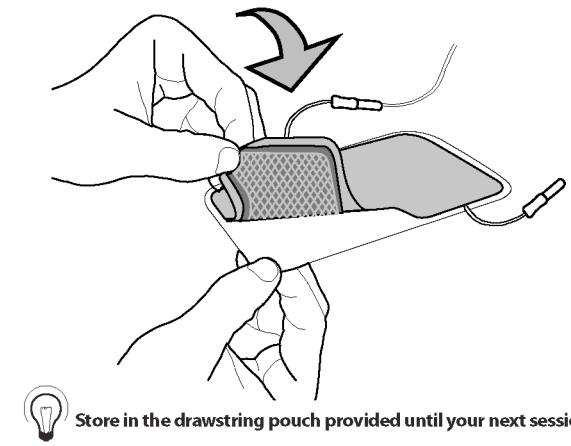


Step 7: Session over



Step 8: Remove pads

Remove the pads from your body and place the liners back on to your pads to protect them



Quick Start Guide

www.bmrRevive.com